



HOUSE & LAND PACKAGE

Your Home, Your Life

TEMPO
LIVING

Lot 149 Aspire, Rosemeadow



Concerto II Eclipse

Land Size 402.6 m²

House Size 237 m²

Home and Land - \$912,900

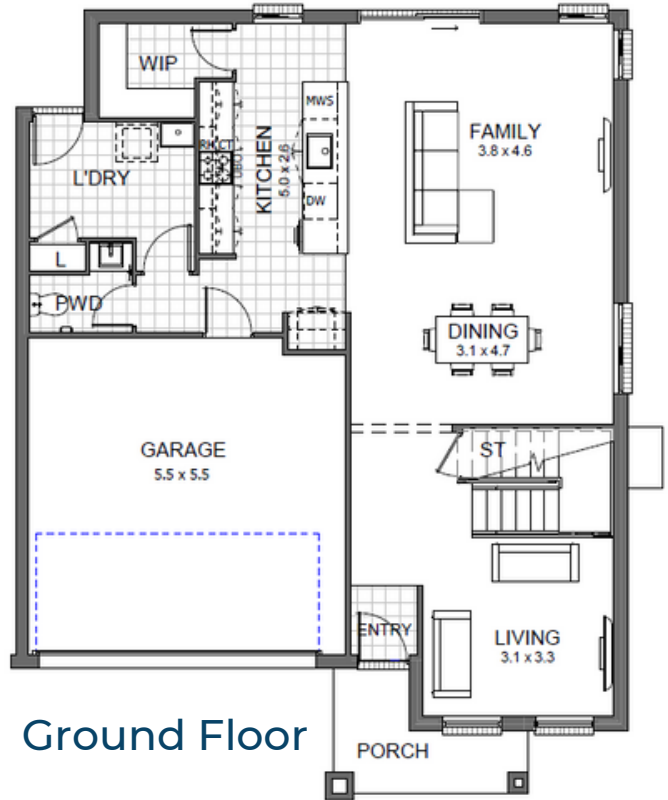
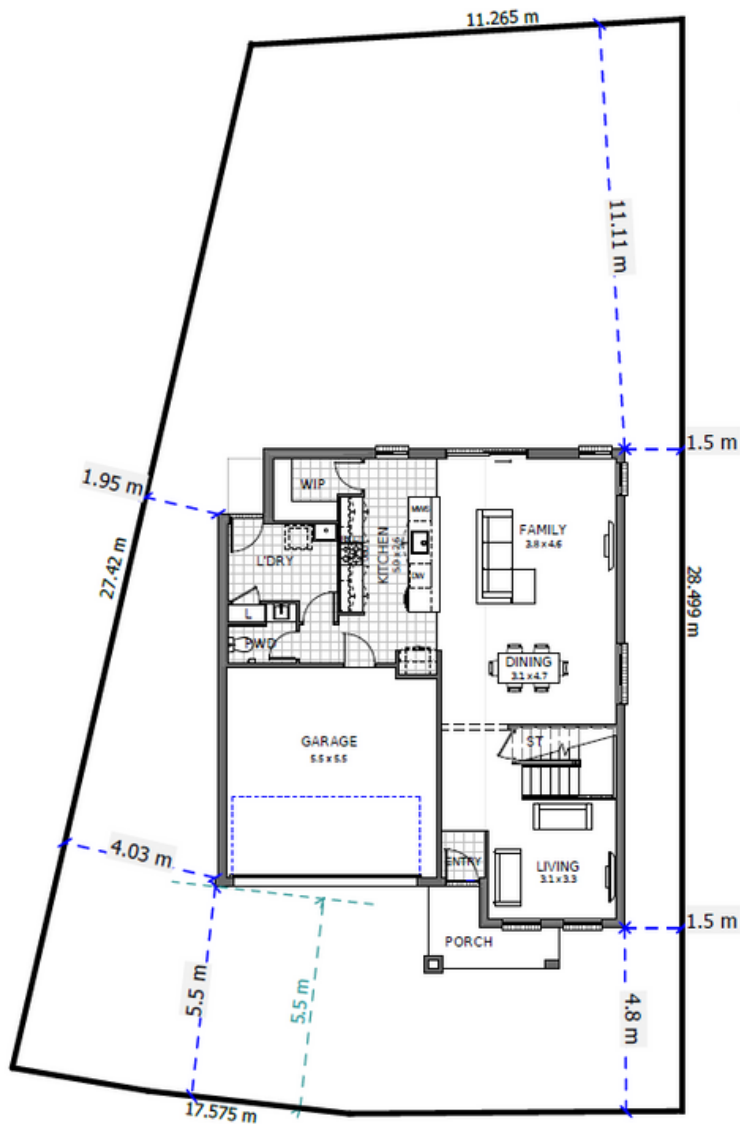
Key Inclusions

- Guaranteed fixed price
- Elite essential Inclusions
- 2.6m ceilings to ground floor
- 20mm stone tops to kitchen & vanities
- Overhead cupboards with bulkheads
- Soft close doors and draws to kitchen and vanities
- AC with 5-year warranty
- Concrete driveway
- Landscape Allowance
- Tiles to porch and ground floor living
- Carpet to stairs and bedrooms
- Mirror sliding doors to robes
- Melamine shelving to robes
- Auto door opener to garage door
- Choice of internal designer collections
- Facade feature brick and render included
- Flyscreens to all windows and sliding doors
- Freestanding bathtub

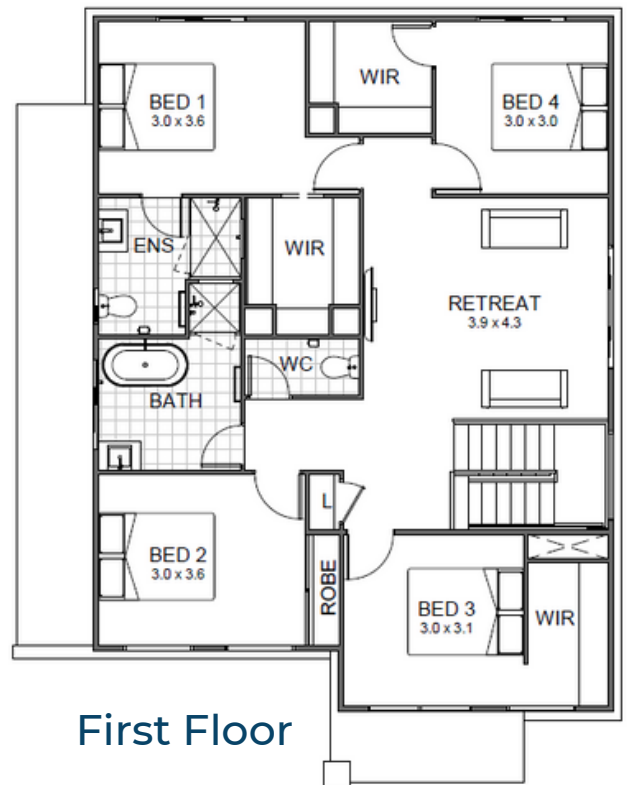
Location

Aspire is located in the heart of Rosemeadow, just 56 km from Sydney's CBD. An already well established area, you will find all of your local amenities right at your doorstep, making Aspire a prime location for everyday life. The lot is within walking distance of shops, schools, religious places of worship and bus stops.

Also within its location comes easy access to major centres, schools, hospitals and transport links, making a fast commute to surrounding areas.



Ground Floor



First Floor

Payment process

Land

5% deposit on land exchange

Build - paid to Tempo Living

\$5000 – Plan & HBA request fee

Balance of 5% HBA Deposit

Tender Price Fixed to February 2024

Please refer to your Tempo Living Tender and Tender Plans for complete details, specification and all Inclusions. All Inclusion selections are to be made from the Tempo Living range. The inclusions, products and suppliers may change without notice and may vary slightly in colour, style and finish. Inclusions located in any display home, sales centre, or marketing imagery may differ slightly to the specification provided in our base specification. Please speak to our Sales Consultants or a Tempo Living representative for full details.